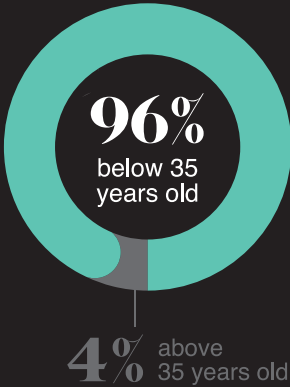


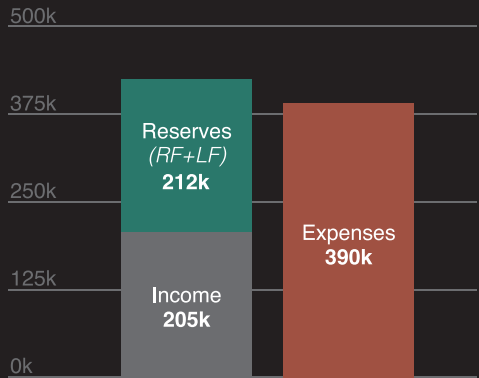
# finances

## DEMOGRAPHICS



Age of regular members and attendees as of 2020

## 2018 ANNUAL INCOME & EXPENSES

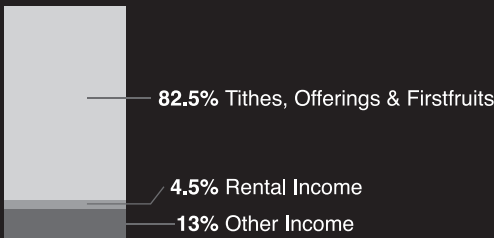


Taken from our audited Annual Financial Statements 2018 (\$)

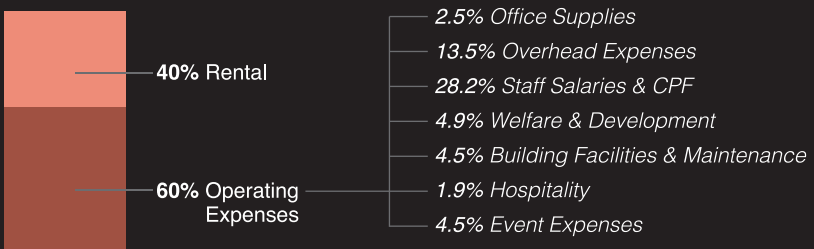
The challenge of a youth church is that, in the pioneering stages, finances are tight. While close to 100% of our regulars tithe faithfully, the majority of them are youth or young adults just starting to work. The rental of our current premise is subsidized, but rises incrementally every 1- 2 years. 2018 was the first year we've had to significantly tap into our reserves, which has compromised our ability to accumulate funds for our future.

## 2018 breakdown

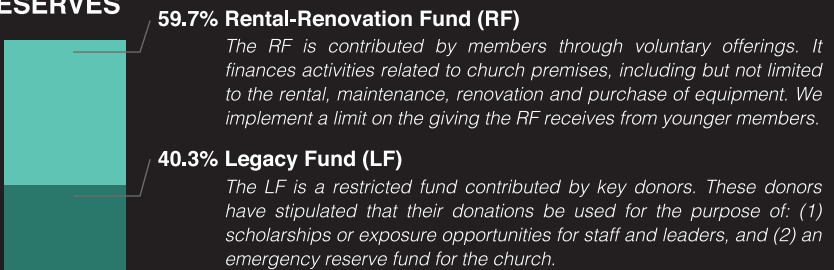
### INCOME



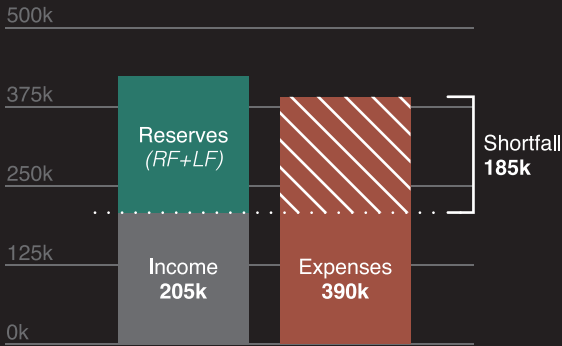
### EXPENSES



### RESERVES



## 2018 SHORTFALL IS SUPPLEMENTED BY RESERVES



## FUTURE FINANCIAL SITUATION

Increasing Rental & Shortfall

	Actual 2017	Actual 2018	Actual 2019	Projected 2020	Projected 2022
Rental	\$148k	\$158k	\$190k	\$247k	\$296k
Shortfall	\$147k	\$185k	\$173k	\$229k*	\$278k*

\*Projected shortfall was calculated using unaudited income & operating expense figures from 2019.

Over the years, out of love for our vision, our pastors and staff have voluntarily refused pay in order to keep building an everyday home for youth—a place to hang out, study, receive tuition and be mentored. Out of gratitude, many of our youth and young adults have grown into tremendous givers themselves, as evidenced by our annual Rental-Renovation Fund collections which they give in addition to their tithes:

### RF 2017/2018

*Given*

**\$103,609**

### RF 2018/2019

*Given*

**\$137,443**

### RF 2019/2020

*Pledged*

**\$116,406**

Amount of Rental-Renovation Fund given / pledged by regulars under 35

## how can i help?

### If you are a regular member or attendee...

Give consistently. Love others and invite them to experience our community. Growth means more people having a real connection with Jesus, it also means more people to help carry the dreams of The Evolution.

### If you are not a member but want to invest in The Evolution...

You can help us by

- Making a One-Time Donation
- Becoming a Regular Donor



Scan to find out more about giving

OR Email us at [finance@theevolution.org](mailto:finance@theevolution.org)

+EVOLUTION

is a Singapore registered Charity: T05SS0159B - PTE - 01